

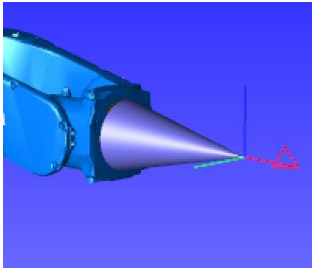
How-To Add a Tool to the MotoSim Model Library and Share It

Introduction

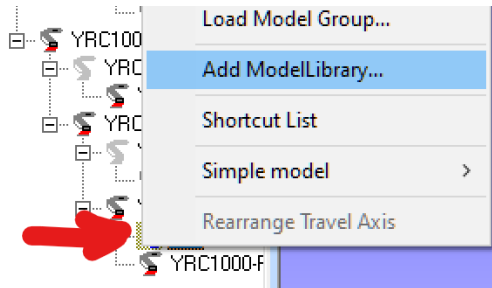
After spending time aligning an end of arm tool and adding its tool data to MotoSim, it is beneficial to save that tool in the Model Library so the next time the tool is needed it can be pulled from the library instead of creating it all over again.

Adding a Custom Tool to the Model Library

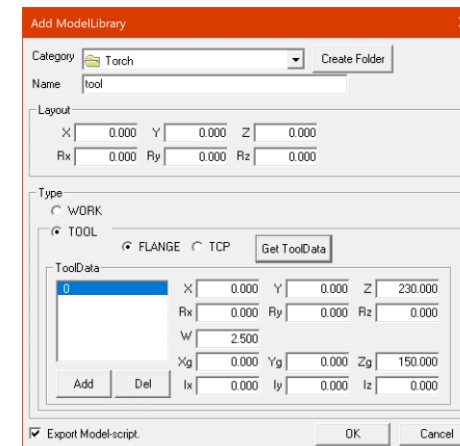
1. Zoom in on the tool so it fills the screen



2. In the CAD-Tree right-click the tool and select **Add ModelLibrary**



3. Select the Category
4. Give it a name
5. Verify the tool and flange are selected
6. Verify the tool data is correct
7. Select OK
8. The tool is screen-captured and copied to the Model Library

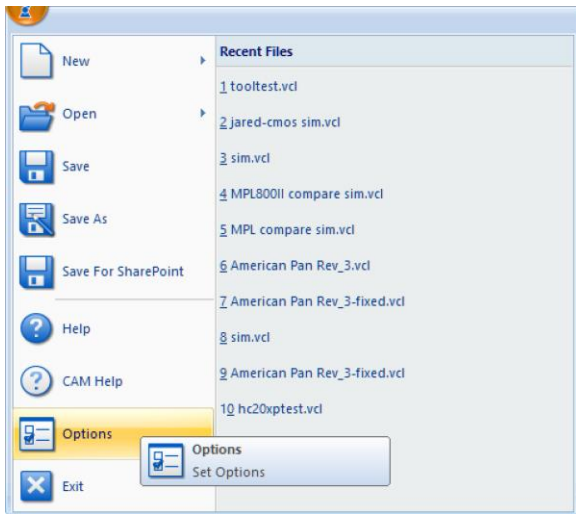


This document captures ideas, experiences, and informal recommendations from the Yaskawa Partner Support team. It is meant to augment – not supersede manuals or documentation from motoman.com. Please contact the Partner Support team at partnersupport@motoman.com for updates or clarification.

Sharing the Model Library

The best way to share the items in the Model Library is to centralize the model library on a network drive.

1. Select the application button and Options



2. Select the **OTHER** tab
3. Fill out the Library Path - a folder on the network
4. In File Explorer, move the Model Library folder to the network location.
5. Make sure all users use the same path

